

The Education Enquirer

Provided By: The Early Learning Coalition of Manatee County

Spring 2010
Volume 2, Issue 7

Follow us on Twitter - [ELCManatee](#)

Executive Director, Paul Sharff



Contents

| | |
|--------------------------|---|
| From the Headlines... | 1 |
| It's Easy Being Green | 2 |
| 40 Developmental Assets | 3 |
| Time's (almost) Up! | 3 |
| VPK Conference Call | 4 |
| DCF Spring Exam Schedule | 4 |
| A Message about Quality | 5 |
| Provider Survey Winner | 5 |
| PIE Reminder | 5 |
| Provider Spotlight | 6 |
| Cooking with Kids | 6 |

Spring Events

Trainings:

Manatee Conference on Young Children
Saturday, April 10 - 8:30 am to 4:00 pm
Manatee Technical Institute
Keynote Speaker: Dr. Pam Phelps
flyer & registration form attached

For a list of all other trainings during April, May, and June 2010, check out the training calendar attached to this newsletter. Please print and share it with your staff! :)

Provider Meetings:

Thursdays / 12:30pm - 2:00pm
April 15, 2010
May 20, 2010
June - none scheduled
@ Manatee United Methodist Preschool
315 15th Street East
Bradenton, FL 34208

Board Schedule:

4/14/10 11:00am Executive/Finance Committee- *postponed until May*
4/21/10 11:00am Board of Directors- *postponed until May*
5/11/10 12:30pm Quality Committee
5/18/10 12:30pm Governance Committee
6/16/10 11:00am Executive/Finance Committee
6/23/10 11:00am Board of Directors

www.elc-manatee.org

From the Headlines... State College of Florida to Offer Bachelor Degree in Early Childhood



From the State College of Florida's website

(Bradenton, Fla., March 26, 2010)
— The Florida State Board of Education (SBOE) at its March 26, 2010, meeting approved proposals by State College of Florida, Manatee-Sarasota (SCF), to offer a bachelor of science degree in early childhood education, birth to age 4; and bachelor of applied science degrees in health services administration and public safety administration/homeland security. The three new baccalaureate degree programs are scheduled to start in 2011.

SCF's workforce baccalaureate proposals were developed in response to requests from community and business leaders and professionals in the fields, several of whom joined SCF President Dr. Lars A. Hafner and college officials at the SBOE meeting in Tampa.

Approval was deferred on SCF's proposal to offer a bachelor of applied science in energy technology. Describing the SCF proposal as having identified a need in an emerging field, SBOE members strongly encouraged college and energy technology industry officials to further develop the proposal, especially in the area of demonstrating that jobs would be available for graduates, and present it at the SBOE May meeting.

College officials indicated they remain committed to the program

and business leaders that requested local access to the specialized degree and they will continue developing the proposal with the intention to return to the SBOE in May.

More information about SCF workforce baccalaureate degree programs is available at www.scf.edu/4-year.

Bachelor of Science in Early Childhood Education *Emphasis in birth through age 4*

[http://www.scf.edu/Academics/
BaccalaureateDegrees](http://www.scf.edu/Academics/BaccalaureateDegrees)

The Bachelor of Science in Early Childhood Education is a unique program that is designed for students seeking employment in the field of child care and children's services. The program prepares students to be highly qualified teachers (including VPK and Head Start), managers or administrators of programs including children from birth through age 4.



It's Easy Being Green

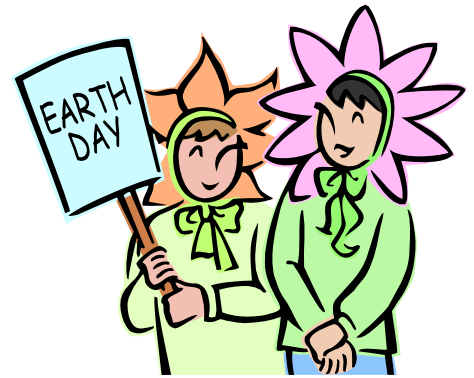
Celebrate the 40th Anniversary of Earth Day on April 22!

Being Earth Friendly is more important than ever. Get your students excited about "going green" with the fun activities and great products featured below!

Reduce, Reuse, Recycle, and Think

Here is a list of 15 simple steps you can take to help the environment

| Packaging | Paper Products | Plastic Products |
|--|--|---|
| Select products in biodegradable packages. | Use cloth napkins instead of paper ones. | Select nonplastic products whenever possible. |
| Buy products in redeemable bottles, and return them. | Buy greeting cards that have been printed on recycled paper. | Reuse plastic produce and grocery bags. |
| Wash and reuse glass jars. | Reuse gift wrap. | Bring your own bags to the grocery store. |
| Recycle aluminum cans. | Recycle newspaper and cardboard. | Recycle plastic bottles. |
| Save and reuse gift and shipping boxes. | Reuse paper lunch bags or use a fabric bag or lunch box. | Refill stainless steel water bottles instead of buying water in plastic bottles |



Fun Classroom Activity Downloads *(These activities are provided via attachment.)*

[Puppets](#)

Turn a paper bag, recycled cup, or box into a puppet.

[Milk Carton Bird Feeder](#)

Bird-watching is fun! It gives you a chance to be outdoors and to get close to nature.

[Design Your Own...](#)

Have your students create a T-shirt, stamp, bookmark, or other item encouraging others to care for the earth.

[Aluminum Can Drive](#)

Many of the aluminum cans you find in the grocery store are made of recycled materials. With your class, organize a school-wide drive to collect and recycle aluminum cans.

[A Week's Worth of Waste](#)

Many of the items you buy are packaged in plastic. How much plastic would you accumulate in one short week?

All activities from [Earth Book for Kids](#)



40 Developmental Assets

By Pam Parmenter

External Assets - Support

The 40 Developmental Assets series is changing. Prior newsletters highlighted the first two External-Support assets in a monthly newsletter format. As ELC moves to a quarterly newsletter, we will now publish a full Asset category.

Let's examine the first 6 assets young children need to fully develop. They are External, meaning they come from the world around the children, not from within. These first 6 assets are all about support from caring adults in the family and the community. Children who experience these assets grow up feeling supported and connected end up being supportive, successful adult contributors to society.

Asset 1 - Family Support *published in December 2009*

Asset 2 - Positive Family *published in January 2010*

Asset 3 - Other Adult Relationships

With the family's support, the child experiences positive relationships with adults outside the family.

What does this look like?

- Get to know the parents of your child's friends.
- Let your child experience you having positive, meaningful conversations and experiences with other adults.

Asset 4 - Caring Neighborhood

Children need caring neighbors provide emotional support and a sense of belonging.

What does this look like?

- Attend activities like this past week's National Night Out.
- Take walks in your neighborhood and chat with the neighbors you see.
- Help your child make and deliver a card for an ailing neighbor.

Asset 5 - Caring Climate in Child Care and Educational Settings

Caregivers and teachers nurture, accept, encourage and provide security.

What does this look like?

- Select child care and schools where your child can experience caring.
- Listen to how the adults are speaking with the children. Is it positive?

Asset 6 - Parent Involvement in Child Care and Education

Parents, caregivers and teachers together create consistent, supportive approach to fostering the child's successful growth.

What does this look like?

- Get to know the staff working with your child.
- Have daily contact with the staff.
- Speak privately with your child's caregiver/teacher about your differences.

Remember: any amount of involvement makes a big difference to your child.

For more information, and to sign up for terrific monthly parent tip sheets, go to

www.search-institute.org

Next time: Empowerment Assets



TIME'S (ALMOST) UP!

Advance registration for the 2010 Manatee Conference on Young Children, "Ingredients for Success," held at Manatee Technical Institute (West Bradenton campus) is set to end at 5:00 pm on Friday, April 2nd. After that time, anyone interested in attending the conference on Saturday, April 10, will still be able to do so, but with no guarantee of the included lunch. Last-minute registration will be available on the morning of the conference between 7:30 AM and 8:30 AM.

The cost for registration after Friday, April 2nd is \$45 and lunch is not guaranteed.





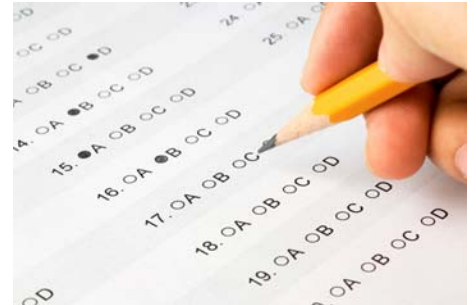
VPK Conference Call

The next VPK Conference call will be held on Thursday, April 8, 2010 from 12:30 to 1:30 pm. We invite you to participate.

DCF Spring Exam Schedule

Here is the schedule for the DCF Training Examination locations through June 2010. If any staff at your site need to schedule their exam for the State-required classes, they must do so 7 days in advance.

| | | |
|----------|-----|---|
| April 10 | 9am | Congregational United Church of Christ 3700 26 th Street West Bradenton, FL 34205 |
| April 26 | 6pm | Manatee Community Action Agency 302 Manatee Avenue West Third Floor Bradenton, FL 34208 |
| April 27 | 6pm | Manatee Community Action Agency 302 Manatee Avenue West Third Floor Bradenton, FL 34208 |
| May 8 | 9am | Congregational United Church of Christ 3700 26 th Street West Bradenton, FL 34205 |
| May 22 | 9am | State College of Florida - Lakewood Ranch Campus 7131 Professional Parkway East Sarasota, FL 34240-8453 |
| June 5 | 9am | Congregational United Church of Christ 3700 26 th Street West Bradenton, FL 34205 |
| June 19 | 9am | South County Family YMCA Venice Branch 701 Center Road Venice, FL 34285 |



- Persons wanting to take the state of Florida exams must pre-register at least 7 days prior to the exam date.
- Examination scheduling 1-888-375-3926 or www.myflorida.com/childcare/training
- For further information contact Venise Duchesne - 1-866-470-1905

Quality of Early Child Care Plays Role in Later Reading, Math Achievement

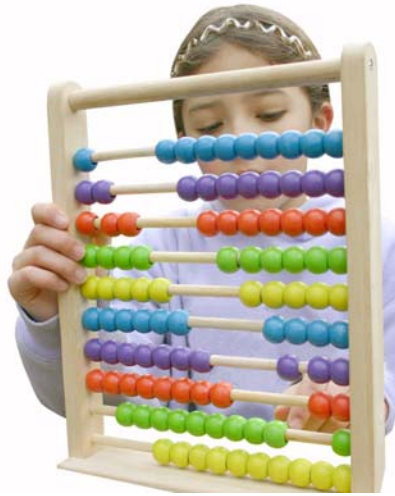
Source: ScienceDaily - www.ScienceDaily.com

Using information from the longitudinal study of early child care and youth development, researchers found that children who spent more time in high-quality child care in the first five years of their lives had better math and reading scores in middle childhood. Researchers also found that low-income children who attended high-quality child care programs before the age of five performed similarly to their affluent peers. These findings have implications for the role of child care in the creation of anti-poverty policies.

As children head back to school and attention turns to strategies for boosting reading and math achievement for low-income youth, a new study says the quality of early child care may play a role.

The study, by researchers at Boston College, the Harvard Graduate School of Education, and Samford University, is published in the September/October issue of *Child Development*.

The researchers looked at reading and math achievement of more than 1,300 children in middle childhood from economic backgrounds ranging from poor to affluent. They used information from the longitudinal Study of Early Care and Youth Development, which was carried out un-



der the auspices of the Eunice Kennedy Shriver National Institute of Child Health and Human Development.

Children who spent more time in high-quality (that is, above-average) child care in the first five years of their lives had better reading and math scores, the researchers found. This was especially true for low-income children; in fact, their scores were similar to affluent children, even after taking into account a variety of family factors, including parents' education and intelligence.

"In large part, our results can be explained by the fact that low-income children who attended higher-quality child care developed reading and math skills in early childhood that likely prepared them for later achievement in middle childhood," according to Eric Dearing, associate professor of applied developmental psychology at Boston College and the study's lead author. "These results give added credence to the central role that higher-quality child care should play in future discussions on anti-poverty policy."

Dear Providers,

The Education Department of the ELC-Manatee would like to thank those of you who completed our online survey. We would like to take this opportunity to announce the winner of the \$50 Kaplan gift card. The winning site is LaPetite Academy—37th Street!

We will contact you to arrange for your prize to be awarded.

Thank you all for your participation!



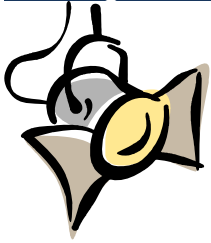
The Education
Department

REMINDER!

If your site is planning on participating in the PIE program, the deadline for submitting all paperwork is Friday, May 28th. For additional information, visit the PIE webpage on the ELC website.

http://www.elc-manatee.org/providers_ed_PIE.shtml





Provider Spotlight

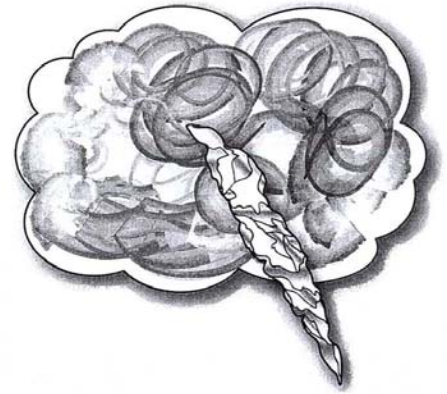
Congratulations, Carmen!

Carmen Prada, of Learning Unlimited in Bradenton, submitted an activity idea to the April/May 2010 Preschool edition of *The Mailbox* (a resource magazine for teachers of all age groups), and it was published! Here is the submitted entry:

Lightning Storm

Art Center

Mix together two parts shaving cream and one part white glue; then tint the mixture gray. Set the mixture at a table along with cloud-shaped cutouts and aluminum foil. A child finger paints a cloud cutout with a thick layer of the mixture; then she crumples a piece of foil to form a lightning bolt and presses it onto the project.



Carmen Prada, Learning Unlimited, Bradenton, FL

C.C.R. & R.

There are no charges/fees associated with a provider listing in the Child Care Resource & Referral Database or for referrals to your program. If you are asked to provide a payment for a referral or listing in the Child Care Resource & Referral database, please call the Agency for Workforce Innovation's Office of Early Learning at 1-866-357-3239. The information reported about a provider's program is objective program information that is based on standards that are attainable for providers based on their type of care.

Cooking with **KIDS**

Grape Apple Pops

This refreshing fruit treat will be met with smiles as the thermostat continues to rise.

Grape Apple Pops

Recipe originally found at: <http://www.thatsmyhome.com/recipes-for-kids/grape-apple-pops.htm>

1/2 (12 ounce) can frozen grape juice concentrate, thawed (about 3/4 cup)

1 (23 ounce) jar chunky apple sauce

In a medium bowl, combine juice concentrate and apple sauce; blend well.

Fill 9 (3 oz) wax-coated paper cups with about 1/3 cup juice mixture.

Stretch a small piece of plastic wrap or aluminum foil across each cup.

Make a slit in wrap to hold stick and stand a popsicle stick in center of cup. Freeze until firm.

Makes 9.